

FONTANA | CA

MANGO AVENUE & SIERRA LAKES PARKWAY



FOR LEASE

113,930 SF FREESTANDING CLASS A DISTRIBUTION BUILDING

For More Information, Contact:

NOAH SAMARIN
EXECUTIVE VICE PRESIDENT
P: 909.912.0007
nsamarin@daumcre.com
CA License #01755814

GARY WOMACK
VICE PRESIDENT
P: 909.652.9041
gwomack@daumcre.com
CA License #00795648

DAVID GORES
VICE PRESIDENT
P: 909.652.9059
dgores@daumcre.com
CA License #01502471

FONTANA | CA

MANGO AVENUE & SIERRA LAKES PARKWAY

PROPERTY HIGHLIGHTS

113,930 SF

FREESTANDING CLASS A
DISTRIBUTION BUILDING

32'
CLEAR HEIGHT

19
DOCK DOORS

**TBD AMPS
EXPANDABLE
TO TBD AMPS**

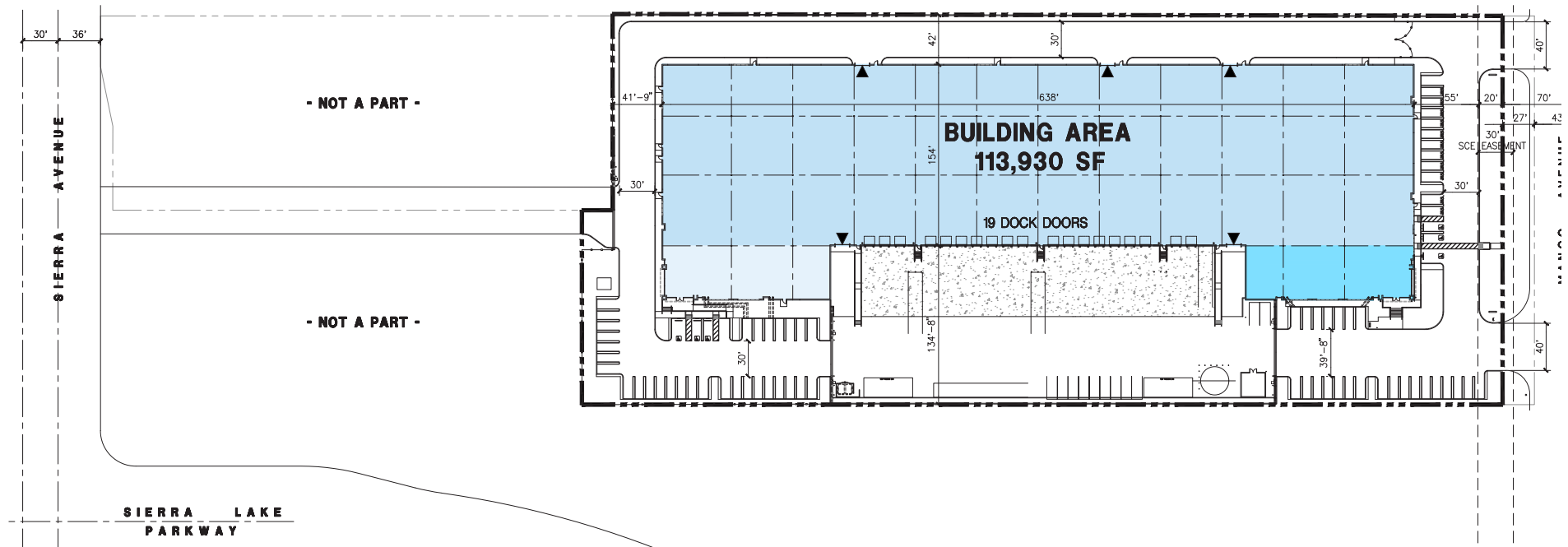
D/AQ Corp. #01129558. Maps Courtesy ©Google & ©Microsoft. Although all information is furnished regarding for sale, rental or financing is from sources deemed reliable, such information has not been verified and no express representation is made nor is any to be implied as to the accuracy thereof, and it is submitted subject to errors, omissions, changes of price, rental or other conditions, prior sale, lease or financing, or withdrawal without notice.

DAUM
COMMERCIAL REAL ESTATE SERVICES

113,930 SF FREESTANDING CLASS A DISTRIBUTION BUILDING

FONTANA | CA

**MANGO AVENUE
& SIERRA LAKES
PARKWAY**



DAVID GORES
VICE PRESIDENT
P: 909.652.9059
dgores@daumcre.com
CA License #01502471

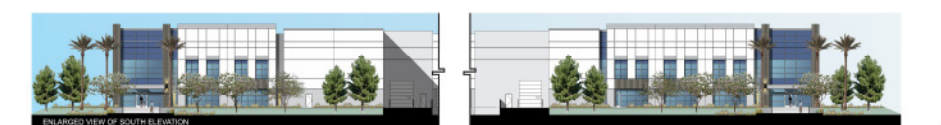
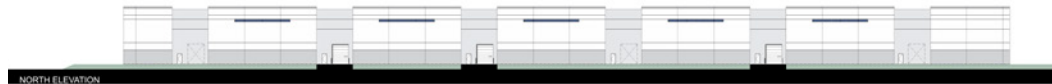
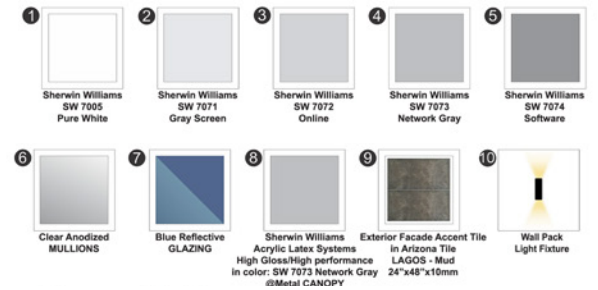
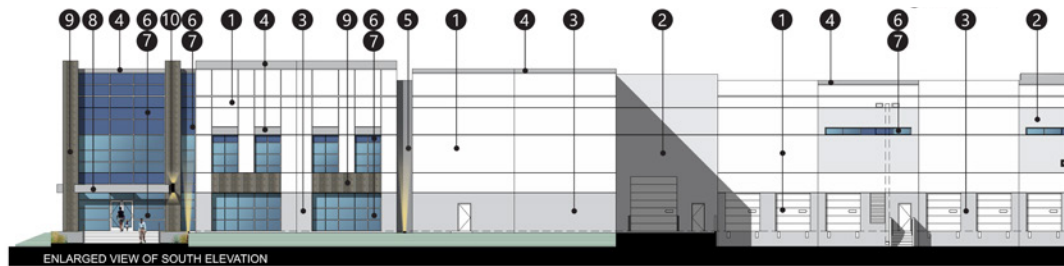


DAUM
COMMERCIAL REAL ESTATE SERVICES

Although all information is furnished regarding for sale, rental or financing is from sources deemed reliable, such information has not been verified and no express representation is made nor is any to be implied as to the accuracy thereof, and it is submitted subject to errors, omissions, changes of price, rental or other conditions, prior sale, lease or financing, or withdrawal without notice. D/AQ Corp. # 01129558

MANGO AVENUE & SIERRA LAKES PARKWAY

ELEVATIONS

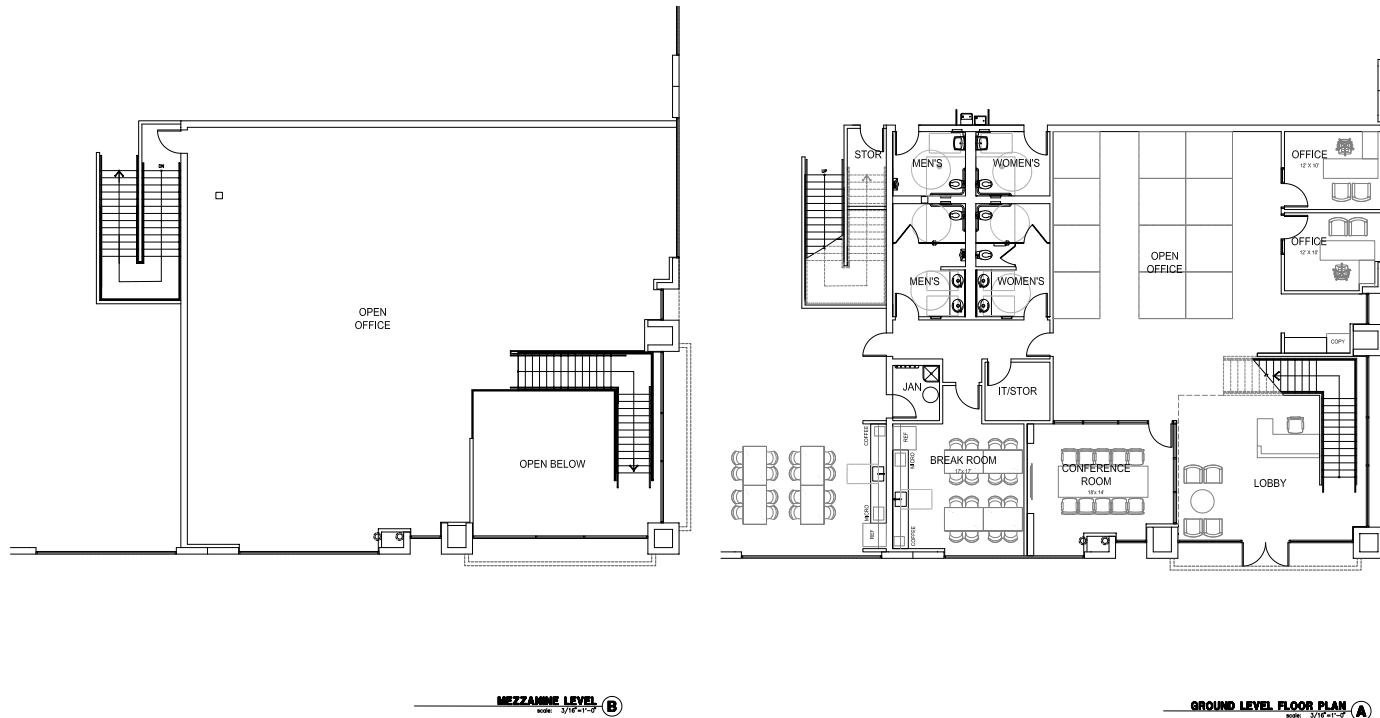


FOR LEASE

113,930 SF FREESTANDING CLASS A
DISTRIBUTION BUILDING

FONTANA | CA

MANGO AVENUE
& SIERRA LAKES
PARKWAY



CONCEPTUAL FLOOR PLAN

GROUND LEVEL = 3,332 SF
MEZZANINE = 2,830 SF

6,162 SF TOTAL

For More Information, Contact:

NOAH SAMARIN
EXECUTIVE VICE PRESIDENT
P: 909.912.0007
nsamarin@daumcre.com
CA License #01755814

GARY WOMACK
VICE PRESIDENT
P: 909.652.9041
gwomack@daumcre.com
CA License #00795648

DAVID GORES
VICE PRESIDENT
P: 909.652.9059
dgores@daumcre.com
CA License #01502471



Although all information is furnished regarding for sale, rental or financing is from sources deemed reliable, such information has not been verified and no express representation is made nor is any to be implied as to the accuracy thereof, and it is submitted subject to errors, omissions, changes of price, rental or other conditions, prior sale, lease or financing, or withdrawal without notice. D/AQ Corp. # 01129558

CORPORATE NEIGHBORS / AMENITIES

MANGO AVENUE & SIERRA LAKES PARKWAY



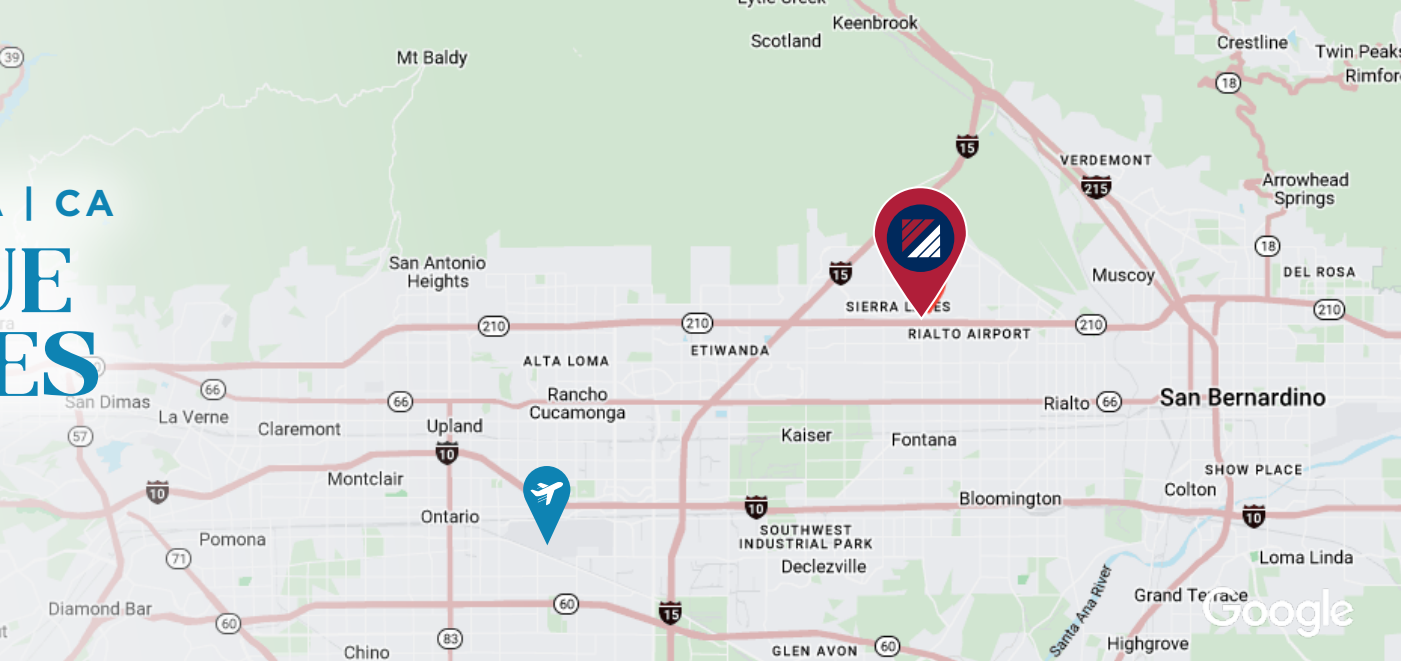
← W. TOWARDS
LOS ANGELES

E. TOWARDS SAN
BERNARDINO →

↓ S. TOWARDS
RIVERSIDE

FONTANA | CA

MANGO AVENUE & SIERRA LAKES PARKWAY



LOCATION HIGHLIGHTS

COMMUTER RAIL DRIVE DISTANCE

Fontana Commuter Rail
(San Bernardino Line)

7 min | 3.5 mi

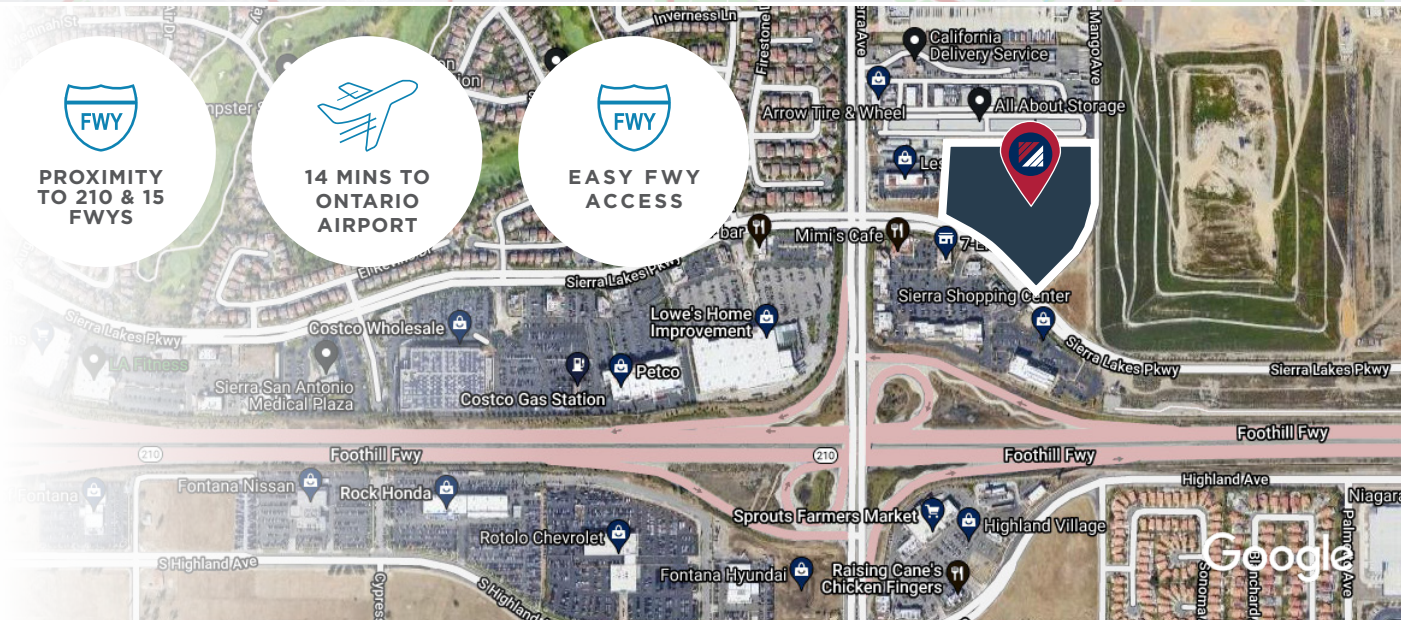
Rialto Commuter Rail
(San Bernardino Line)

12 min | 7.2 mi

AIRPORT DRIVE DISTANCE

Ontario International Airport

21 min | 13.6 mi



For More Information, Contact:

NOAH SAMARIN
EXECUTIVE VICE PRESIDENT
P: 909.912.0007
nsamarin@daumcre.com
CA License #01755814

GARY WOMACK
VICE PRESIDENT
P: 909.652.9041
gwomack@daumcre.com
CA License #00795648

DAVID GORES
VICE PRESIDENT
P: 909.652.9059
dgores@daumcre.com
CA License #01502471

DAUM
COMMERCIAL REAL ESTATE SERVICES

Although all information is furnished regarding for sale, rental or financing is from sources deemed reliable, such information has not been verified and no express representation is made nor is any to be implied as to the accuracy thereof, and it is submitted subject to errors, omissions, changes of price, rental or other conditions, prior sale, lease or financing, or withdrawal without notice. D/AQ Corp. # 01129558

FOR LEASE

**113,930 SF FREESTANDING CLASS A
DISTRIBUTION BUILDING**

FONTANA | CA

**: MANGO AVENUE
& SIERRA LAKES
PARKWAY**

For More Information, Contact:

NOAH SAMARIN
EXECUTIVE VICE PRESIDENT
P: 909.912.0007
nsamarin@daumcre.com
CA License #01755814

GARY WOMACK
VICE PRESIDENT
P: 909.652.9041
gwomack@daumcre.com
CA License #00795648

DAVID GORES
VICE PRESIDENT
P: 909.652.9059
dgores@daumcre.com
CA License #01502471



Although all information is furnished regarding for sale, rental or financing is from sources deemed reliable, such information has not been verified and no express representation is made nor is any to be implied as to the accuracy thereof, and it is submitted subject to errors, omissions, changes of price, rental or other conditions, prior sale, lease or financing, or withdrawal without notice. D/AQ Corp. # 01129558