

Welcome to the Ridge Landfill Open House



Progressive
Waste Solutions

Welcome to the Ridge Landfill Open House



Progressive
Waste Solutions

Welcome to the Ridge Landfill Open House

We are committed to keeping our neighbours, local residents and the broader community informed about our operation and our future plans and hope you find the event informative.

Here you can learn about the proposed expansion and how you can be involved and stay informed.

Progressive Waste Solutions staff and consultants are available to answer any questions you may have as you read the presentation boards.



About Progressive Waste Solutions

Ridge Landfill Open House



- Progressive Waste Solutions is a leading provider of comprehensive waste management services in Ontario as well as across Canada.
- We have earned a highly valued reputation for environmental protection, waste diversion and recycling and development of renewable energy projects.
- We are committed to the most environmentally responsible management practices.
- Progressive Waste Solutions is a growing company that employs over 60 persons in the Municipality of Chatham-Kent.



The Ridge Landfill

Ridge Landfill Open House



- Landfill operations began in 1966.
- Progressive Waste Solutions takes ownership and operation in 2005.
- Employs 23 persons.
- Landfill receives all Chatham-Kent residential waste.
- Landfill is expected to reach capacity in 2022.



Environmental Management System

Ridge Landfill Open House



We have an excellent environmental record at the landfill site.

- We have an environmental management system in place for the landfill that follows stringent Ministry of Environment and Climate Change regulations.
- We continually review and update our operational programs in and around the landfill to maintain environmental protection and prevention of litter, birds, odour, noise, dust and traffic from impacting our neighbours and the community.

Gas collection well
at the Ridge Landfill ►

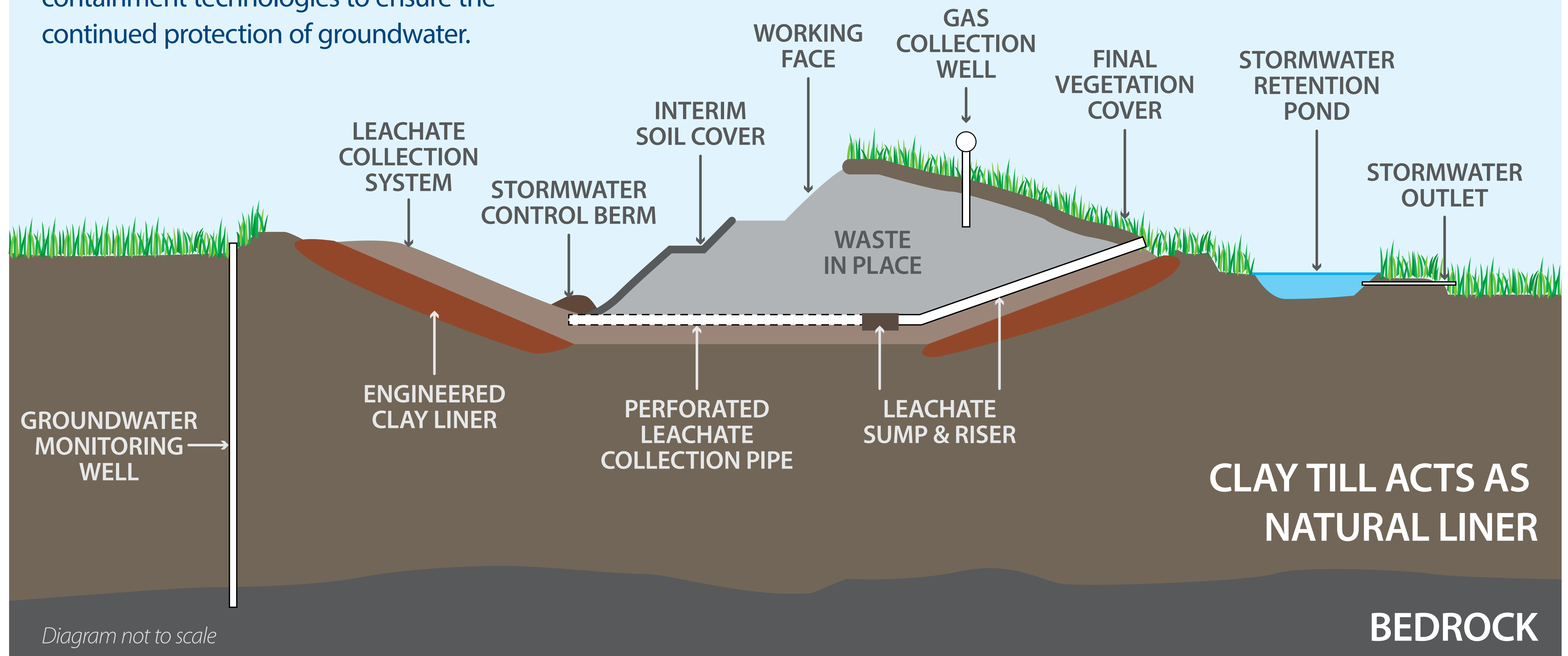


An Environmentally Engineered Landfill

Ridge Landfill Open House

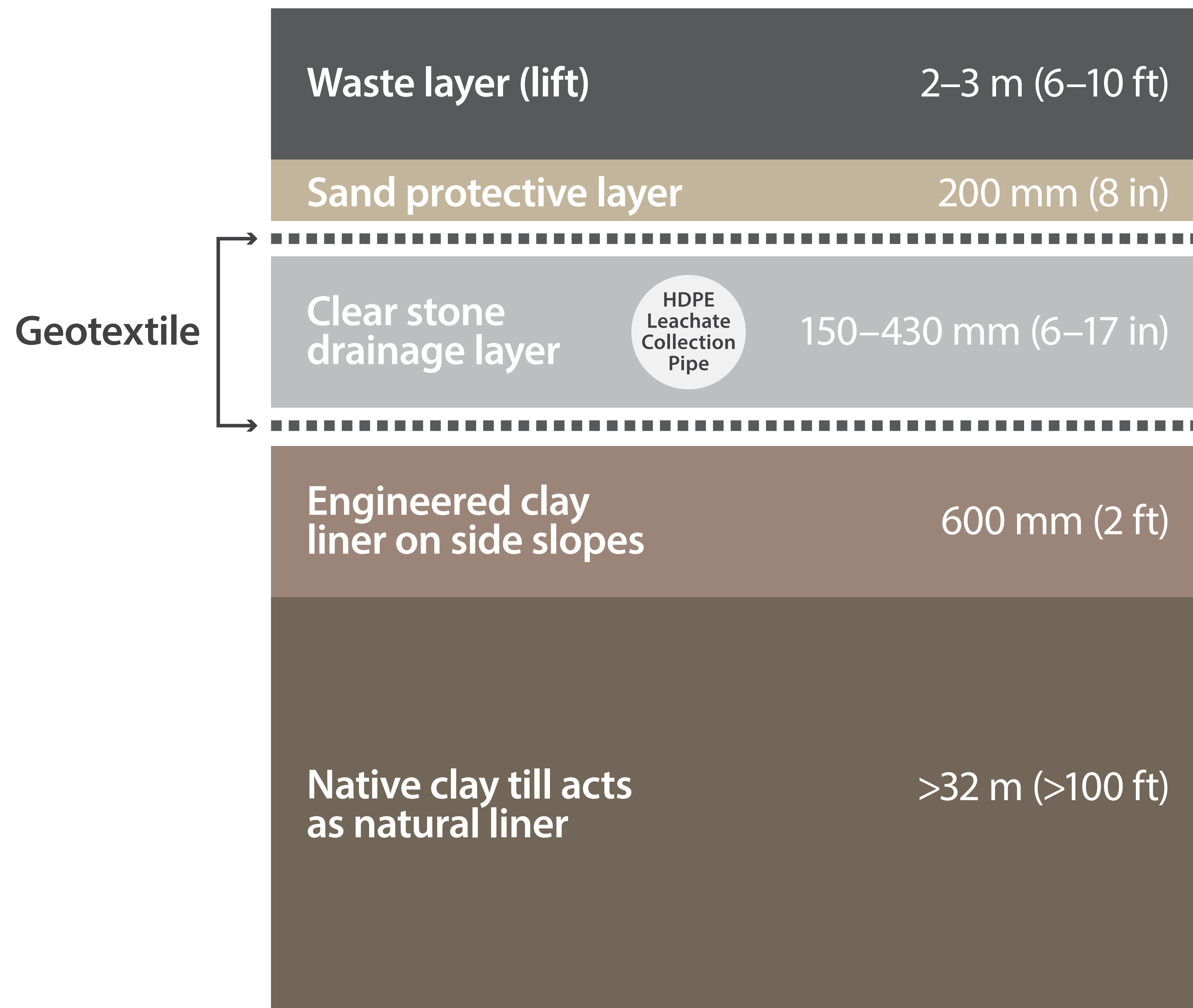


The Ridge Landfill uses engineered leachate containment technologies to ensure the continued protection of groundwater.



Leachate Collection System

Ridge Landfill Open House



Leachate: Water (either from rain or decomposition of waste) that percolates through the waste.

Leachate Collection System: A system of stone drainage material and pipes and that collects the leachate at the bottom of the landfill.

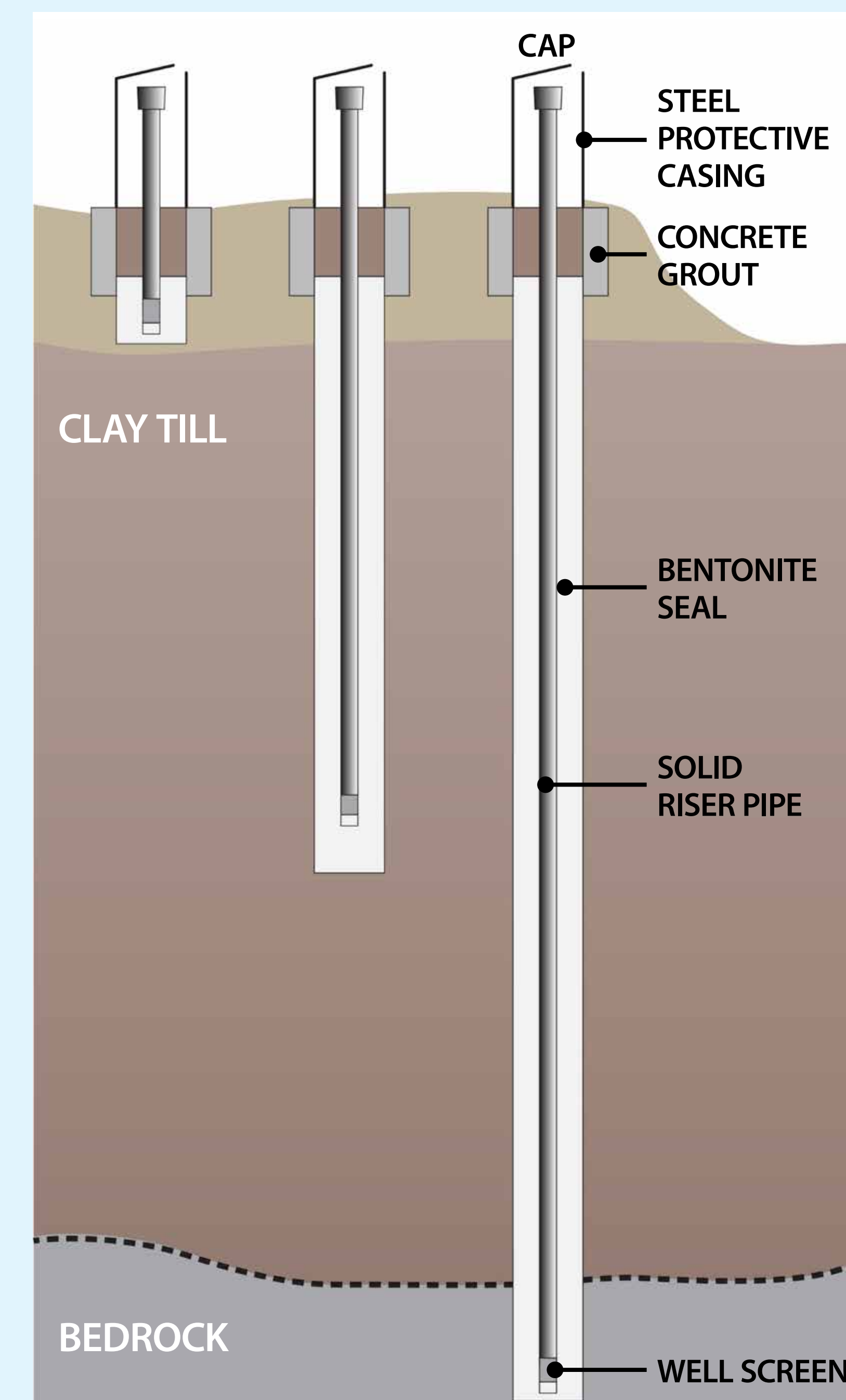
Liner: A barrier layer beneath the leachate collection system to prevent leachate from entering the groundwater.

Groundwater Monitoring System

Ridge Landfill Open House

- The Ridge Landfill has an environmental management system that monitors all aspects of the landfill including groundwater in and around the landfill.
- Annual monitoring of ground and surface water is conducted by a third party providing assurances the environment is being protected.
- There have been no impacts to the groundwater identified.

Typical Groundwater Monitoring Wells



Wells are placed strategically around the site to monitor groundwater at various depths.

A Partner in the Community

Ridge Landfill Open House



The Ridge Landfill contributes approximately \$13 million directly and indirectly to the local community.

- Approximately \$9 million is spent annually on salaries, construction and road maintenance, goods and services purchased, taxes, etc.
- We are committed to being a good neighbour and a responsible partner in the communities we serve.



Progressive Waste Solutions supports Breast Cancer awareness.

Last year, Progressive Waste placed the winning bid on this special pink collection can created by Curotto and the Susan G. Komen For The Cure Foundation. We are proud to have it in use with our collection fleet on the streets of the Municipality of Chatham-Kent, Ontario, reaching 35,000 persons.

Community Host Agreement & Commitments

Ridge Landfill Open House



Of the \$13 million annual benefit, over \$4 million is provided directly to the local community.

- An annual royalty payment to the Municipality of Chatham-Kent based on the volume of material that comes into our facility from outside Chatham-Kent. In 2015, this amounted to \$2.3 million; and since 2005 we have contributed over \$15.9 million to the Municipality.
- Significant financial contributions to the Ridge Landfill Trust based on the volume of waste the landfill receives each year. In 2015, the Ridge contributed approximately \$1.1 million. These monies are to benefit the local community such as the building of the Community Centre Park and splash pad (see photos at right), a new seniors' centre and youth drop in centre in downtown Blenheim.
- The Ridge provides an incentive to the Municipality of Chatham-Kent to reduce the amount of waste delivered to the Ridge Landfill. The greater the tonnes diverted from disposal, the more the municipality receives in additional funding. On average, Chatham-Kent receives over \$800,000 per year.



Our Future Plans

Ridge Landfill Open House



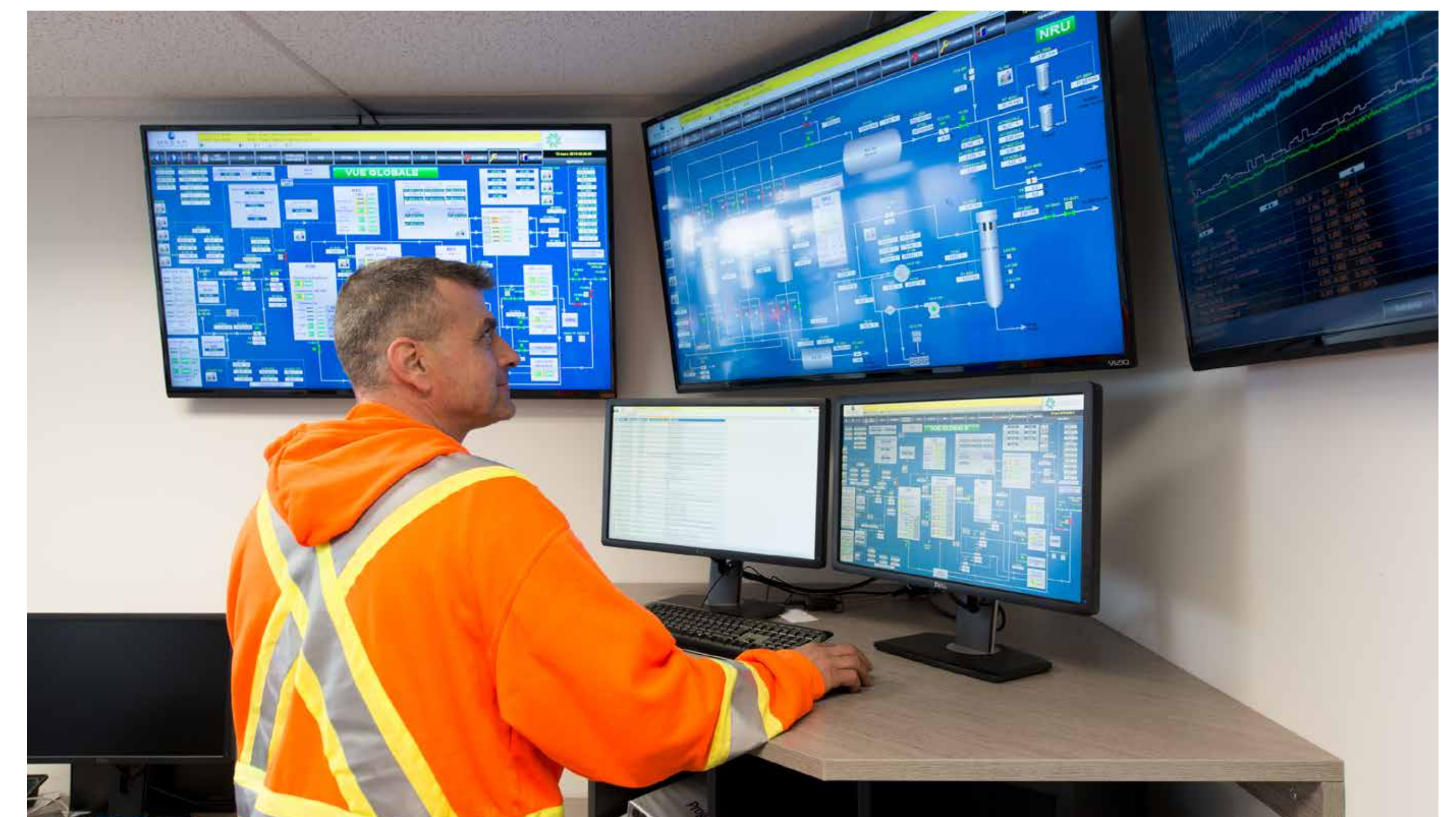
Progressive Waste Solutions is proposing to expand the life of the Ridge Landfill for an additional 20 years following stringent Ontario Ministry of Environment and Climate Change landfill regulations.

The annual permitted disposal capacity will not increase.

Progressive Waste Solutions will continue to accept industrial and commercial waste from across the province and will seek to expand its service area for residential waste across Ontario.

Other future plans for the landfill include:

- The development of a biogas facility to convert landfill gas into a pipeline quality natural gas which would be the largest biogas facility in Ontario and one of the largest in North America. We already operate a similar biogas facility at our Lachenaie Landfill in Quebec.
- The expansion of a public drop-off depot to allow residents to divert materials which are not being collected in the current residential recycling program.
- The construction of a new community activity centre.

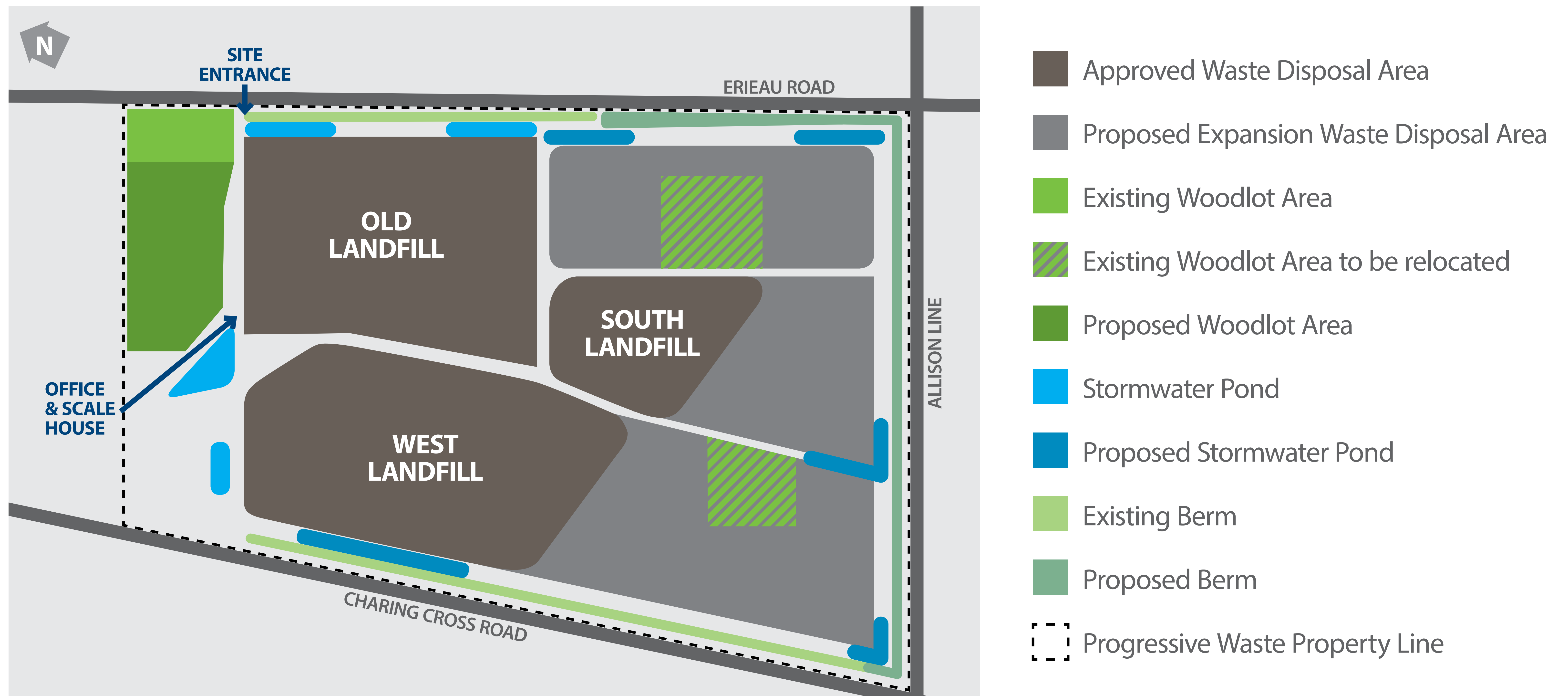


Our Future Plans: The proposed expansion

Ridge Landfill Open House



Map of current site and potential expansion areas



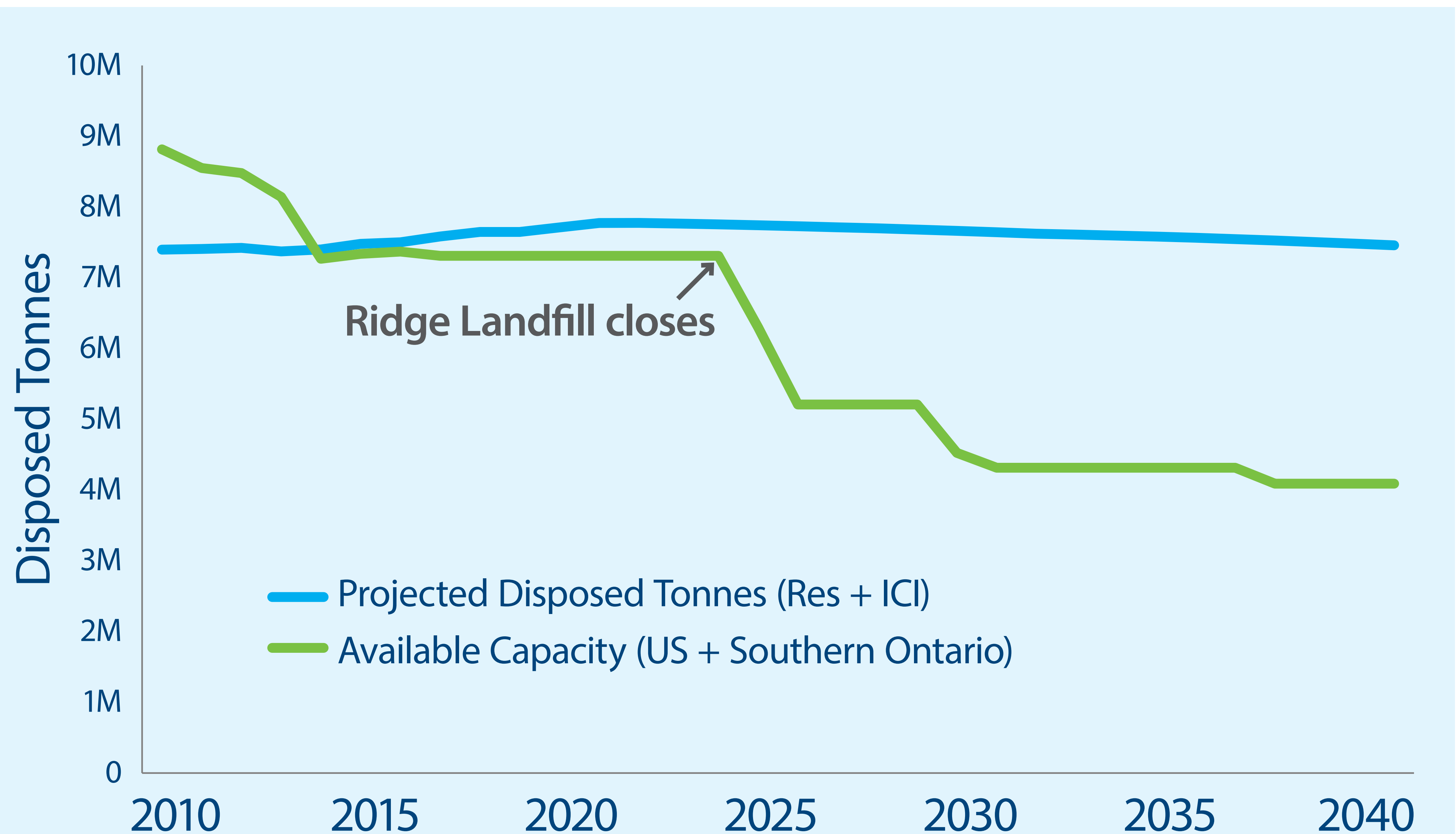
Our Future Plans: Need for more capacity

Ridge Landfill Open House



Despite increased waste diversion, over 7 million tonnes of residual waste is disposed of annually in Ontario and the U.S. With provincial population growth, this need is expected to continue.

With the expected closure of existing Ontario landfill sites over the next 10 years (which could include the closure of the Ridge Landfill in 2022), it is estimated that there will be a need for new or expanded waste disposal facilities in Southern Ontario.



Note: The graph illustrates projected tonnage assuming a moderate increase in waste diversion in both the residential (Res) and Industrial, Commercial and Institutional (ICI) sectors (e.g. residential diversion increase to 55% and ICI diversion increase to 35%).

Our Future Plans: Alternatives to expansion

Ridge Landfill Open House



Progressive Waste Solutions considered alternative ways to continue to provide waste disposal services:

Do nothing

Involves closing the Ridge Landfill. This alternative does not provide capacity to meet the long term waste disposal needs for Chatham-Kent and Southern Ontario.

Close Ridge Landfill and construct a new landfill

Involves finding a new landfill site location. Past work demonstrates that there is no location for a landfill site in Southern Ontario that is equivalent to or better than the Ridge. Progressive Waste Solutions does not own any other property suitable for landfill in Southern Ontario.

Expand Ridge Landfill

Involves expanding the Ridge Landfill. This alternative provides capacity to meet the long term disposal needs but does not result in any additional diversion of materials from disposal.

Expand the Ridge Landfill with waste diversion

Involves creating more long-term disposal capacity for local and Southern Ontario needs. Additional waste diversion processing capacity could be added at the facility and/or elsewhere.

Preferred Alternative

Environmental Assessment Process

Ridge Landfill Open House



The proposed expansion of the Ridge Landfill requires approval under the Environmental Assessment (EA) Act. Two key steps must be completed. At each step, the Ministry of the Environment and Climate Change must provide for approval to proceed.

Step 1

Terms of Reference (ToR)

- Outlines the EA 'road map', the activities and studies to be undertaken during the EA process for the proposed Ridge Landfill expansion.
- Includes consultation with the community.

Step 2

Environmental Assessment (EA)

- Considers alternative ways of developing the Ridge Landfill.
- Documents potential environmental effects (positive and negative) of expanding the landfill.
- Develops a plan to reduce or eliminate negative impacts of the project.
- Includes consultation with the community.

Terms of Reference

Ridge Landfill Open House

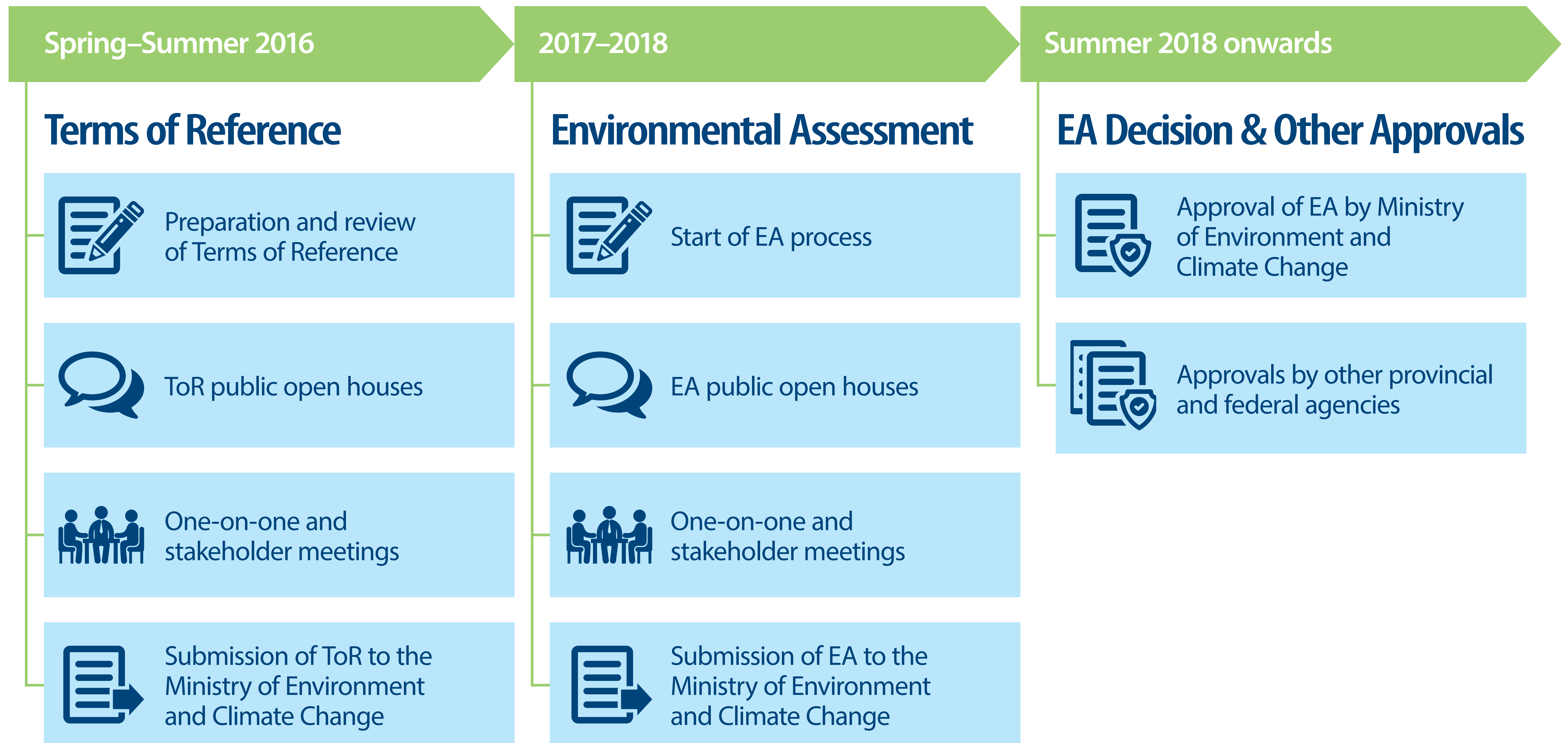


The Terms of Reference will describe the following:

- Need for additional disposal capacity locally and in Southern Ontario.
- Alternatives to the proposed expansion that were considered.
- The natural environment and community characteristics around the Ridge Landfill that might be affected by the proposed expansion.
- Alternative ways the site could be developed to provide additional capacity to meet the need for an additional 20 years.
- Alternative methods to increase waste diversion.
- The process and criteria to be used to identify a preferred way to expand the landfill and assess potential effects.
- Technical studies planned to identify potential effects and determine mitigation.
- During the EA, the consultation that Progressive Waste Solutions will undertake will help the company understand community concerns and keep you involved in the project.

Environmental Assessment Process

Ridge Landfill Open House

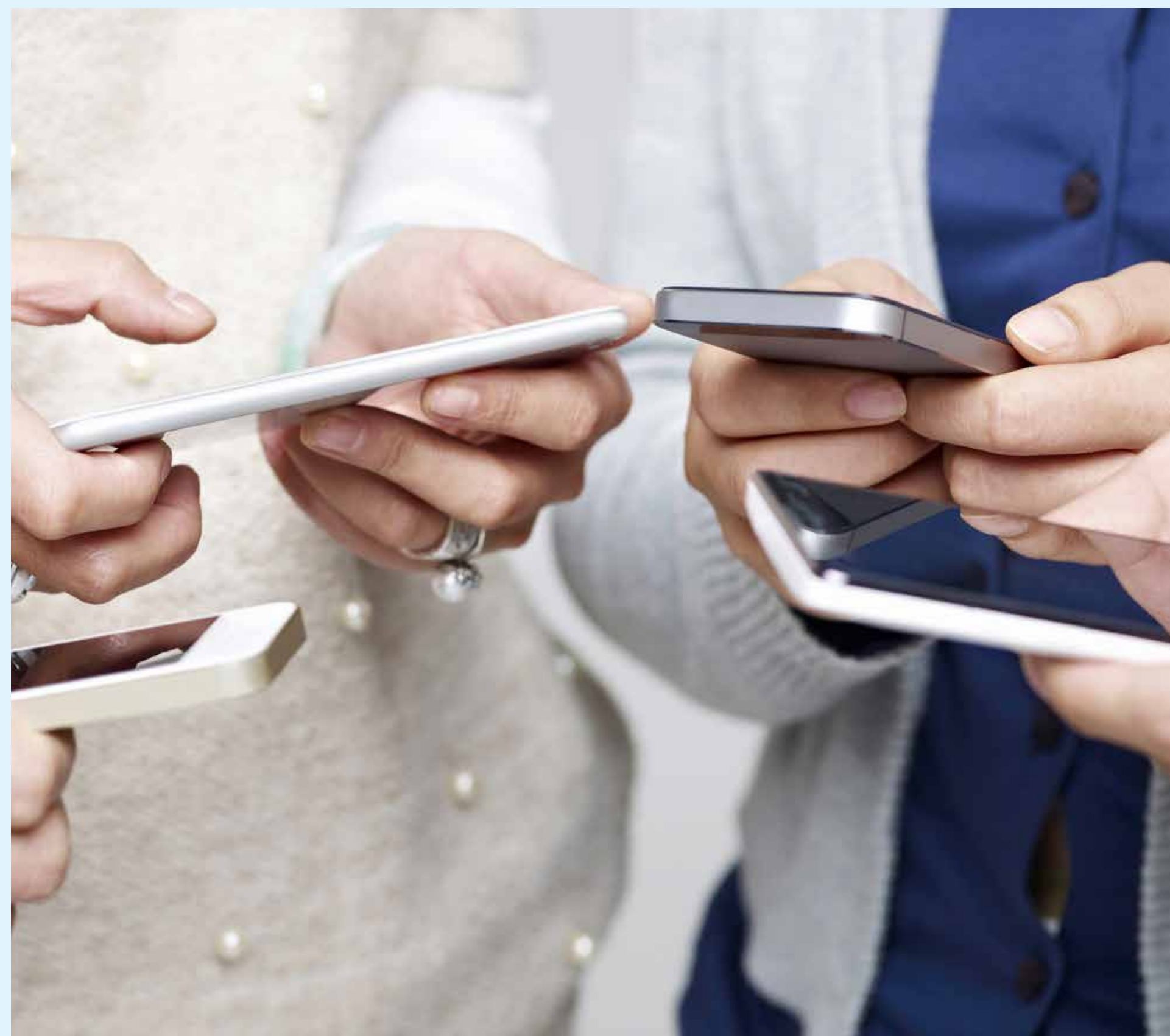


Get Involved

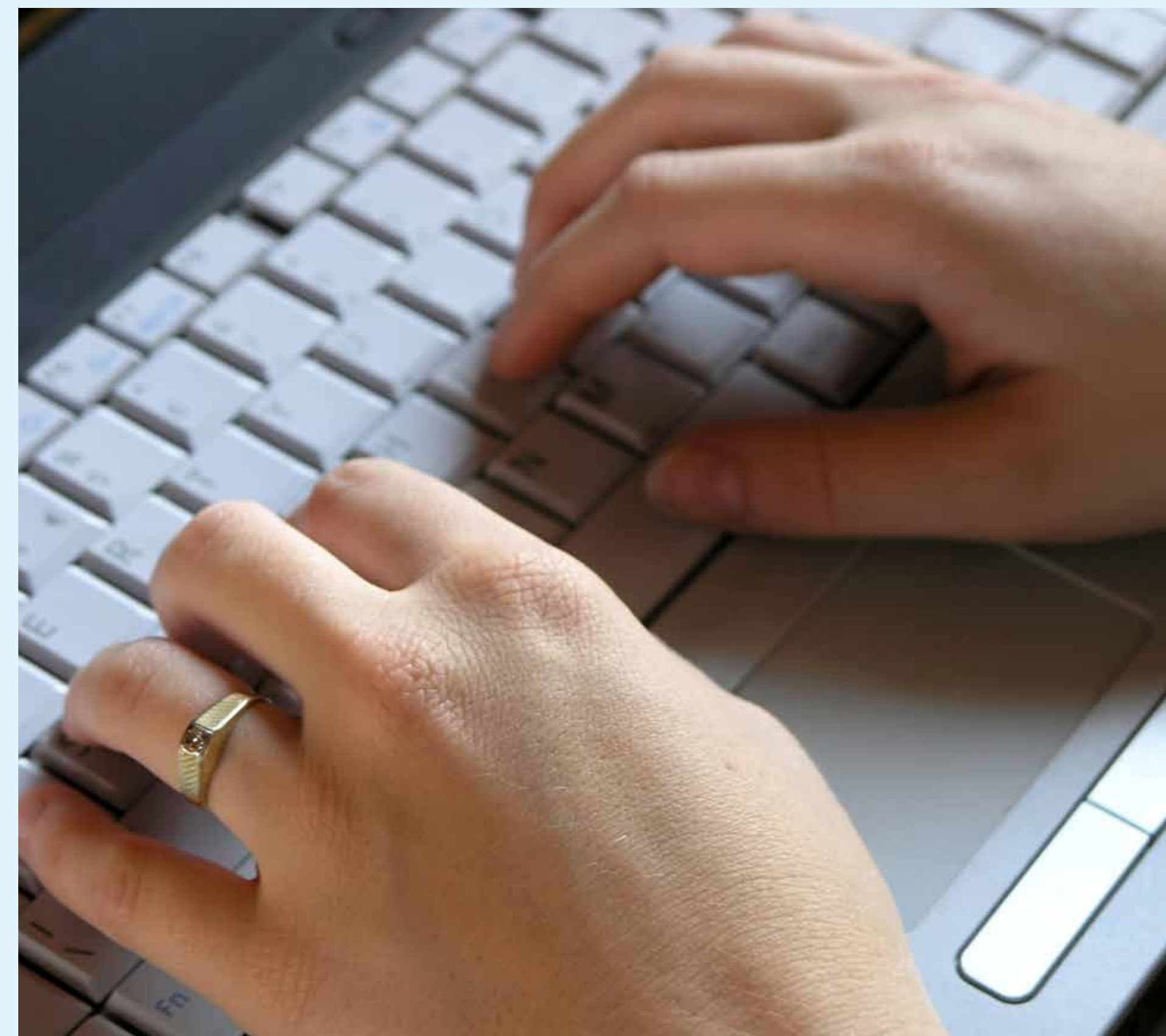
Ridge Landfill Open House



Visit us at: **ridgelandfill.com**



Sign up to the
email list



Fill out a
feedback form



Cathy Smith

Project Manager

Progressive Waste Solutions Canada

📞 519-676-5000

✉️ cathy.smith@progressivewaste.com

Stay Involved

Ridge Landfill Open House



During the Terms of Reference, consultation with the community will include:

Two Public Open Houses

To exchange information and hear community concerns and questions.



Community Newsletters

To provide news and information about the site and proposed expansion project.



Stakeholder Meetings

To provide opportunity for one-on-one meetings with Progressive Waste Solutions staff to discuss the proposed expansion project.



Thank you

Ridge Landfill Open House



We want to hear from you!

Your issues or concerns are important to us, and we want to know about them.

We want to ensure that your questions are addressed and that approaches to their resolution are developed and understood.

You can leave written questions or comments you have with us today, or send them to us anytime at: **ridgelandfill.com**

