



**BUILDING 4**



## **WEST FULTON COMMERCE PARK**

**633,300 TOTAL SF AVAILABLE | PHASE II**

**1950 OAK LAWN AVENUE  
SOUTH FULTON, GA 30336**

**PRICE WEAVER**

+1 404 877 9266 | [price.weaver@colliers.com](mailto:price.weaver@colliers.com)

**SCOTT PLOMGREN**

+1 404 877 9293 | [scott.plomgren@colliers.com](mailto:scott.plomgren@colliers.com)

**HARRISON MARSTELLER**

+1 404 877 9219 | [harrison.marsteller@colliers.com](mailto:harrison.marsteller@colliers.com)

**HOOPER WILKINSON**

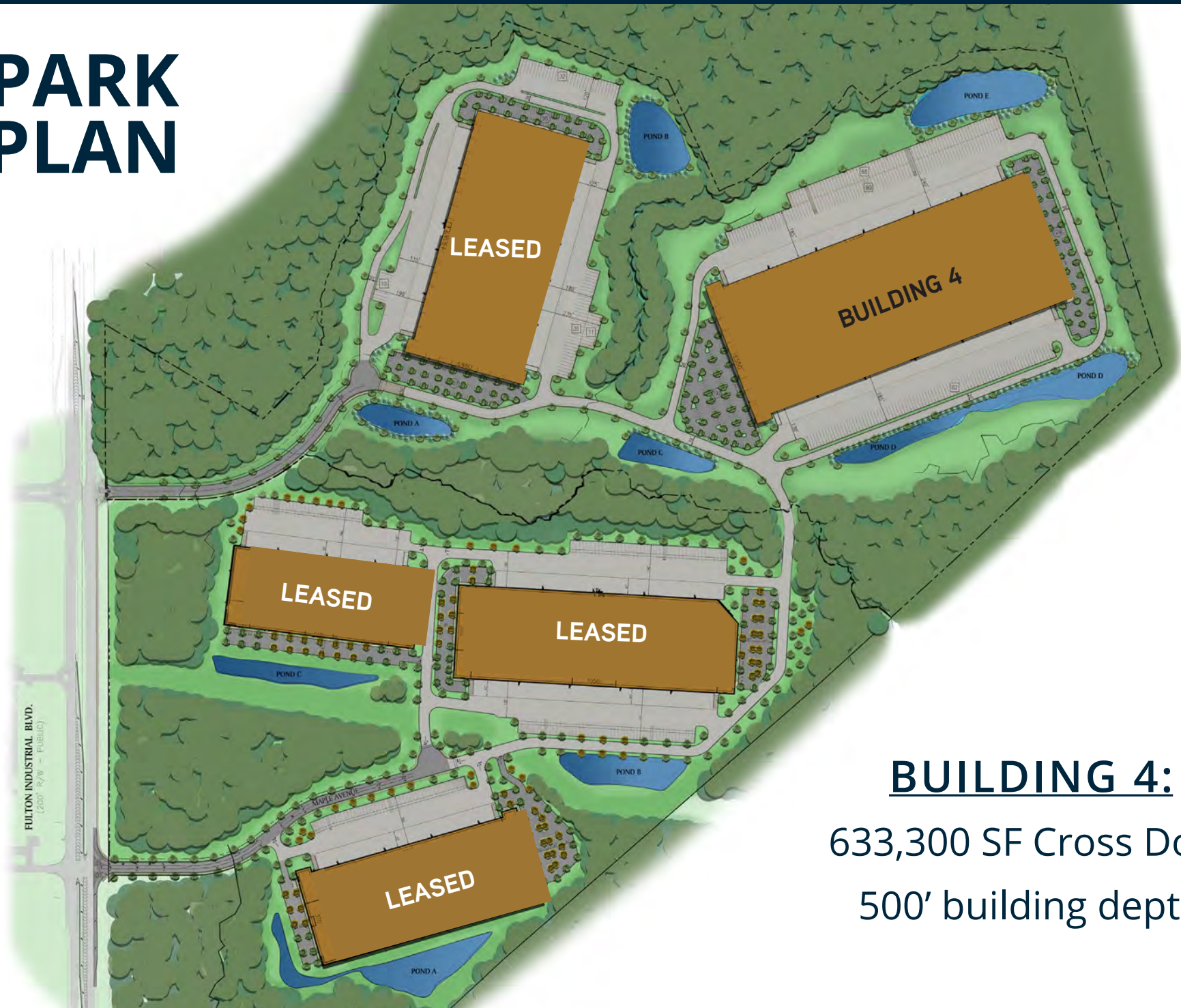
+1 404 877 9233 | [hooper.wilkinson@colliers.com](mailto:hooper.wilkinson@colliers.com)



[www.WestFultonCommercePark.com](http://www.WestFultonCommercePark.com)



# PARK PLAN



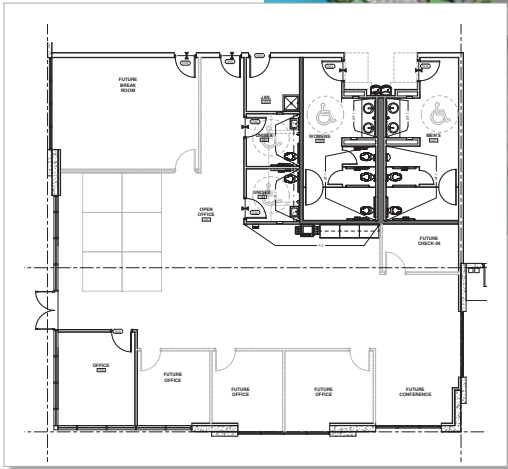
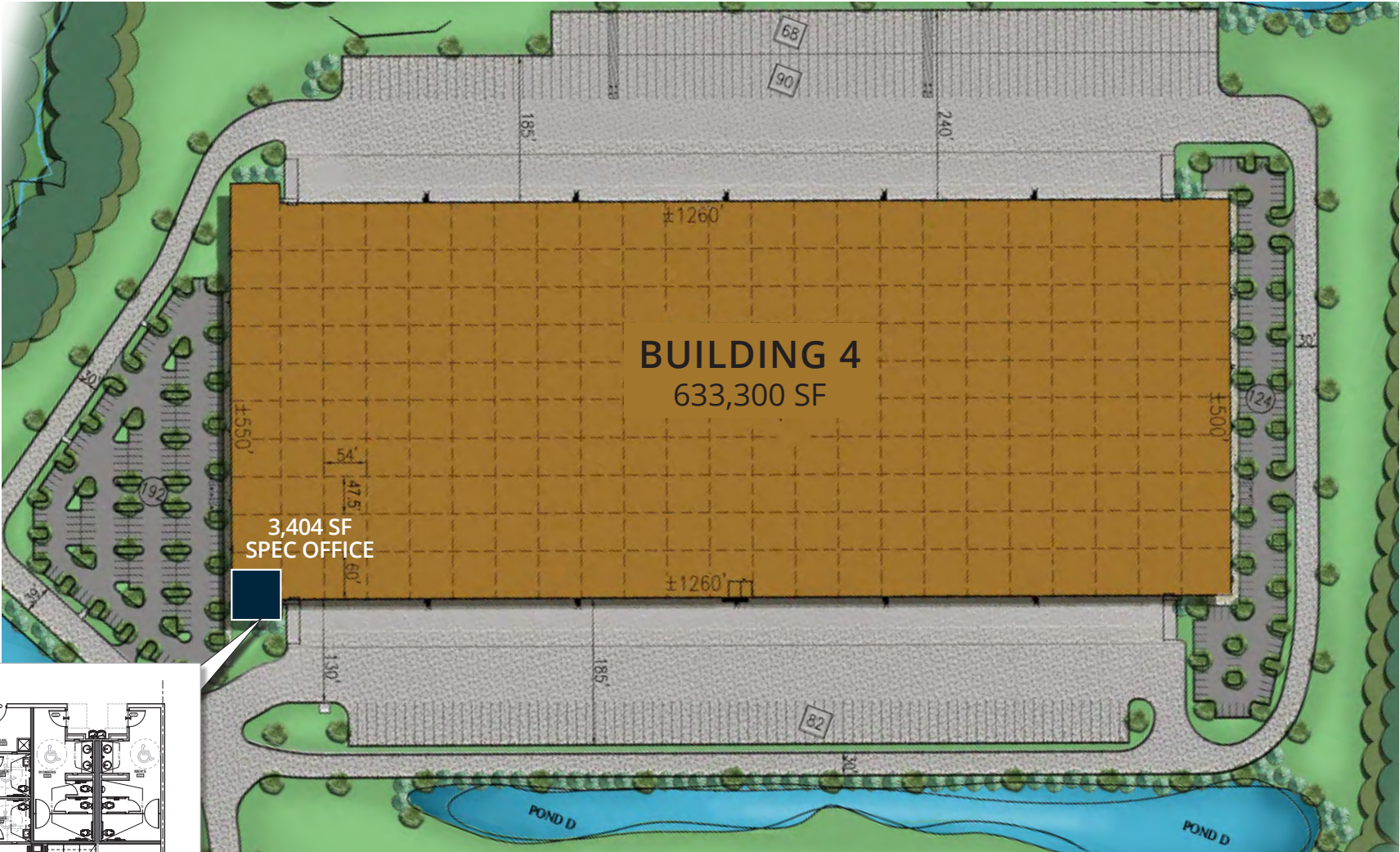
## BUILDING 4:

633,300 SF Cross Dock  
500' building depth

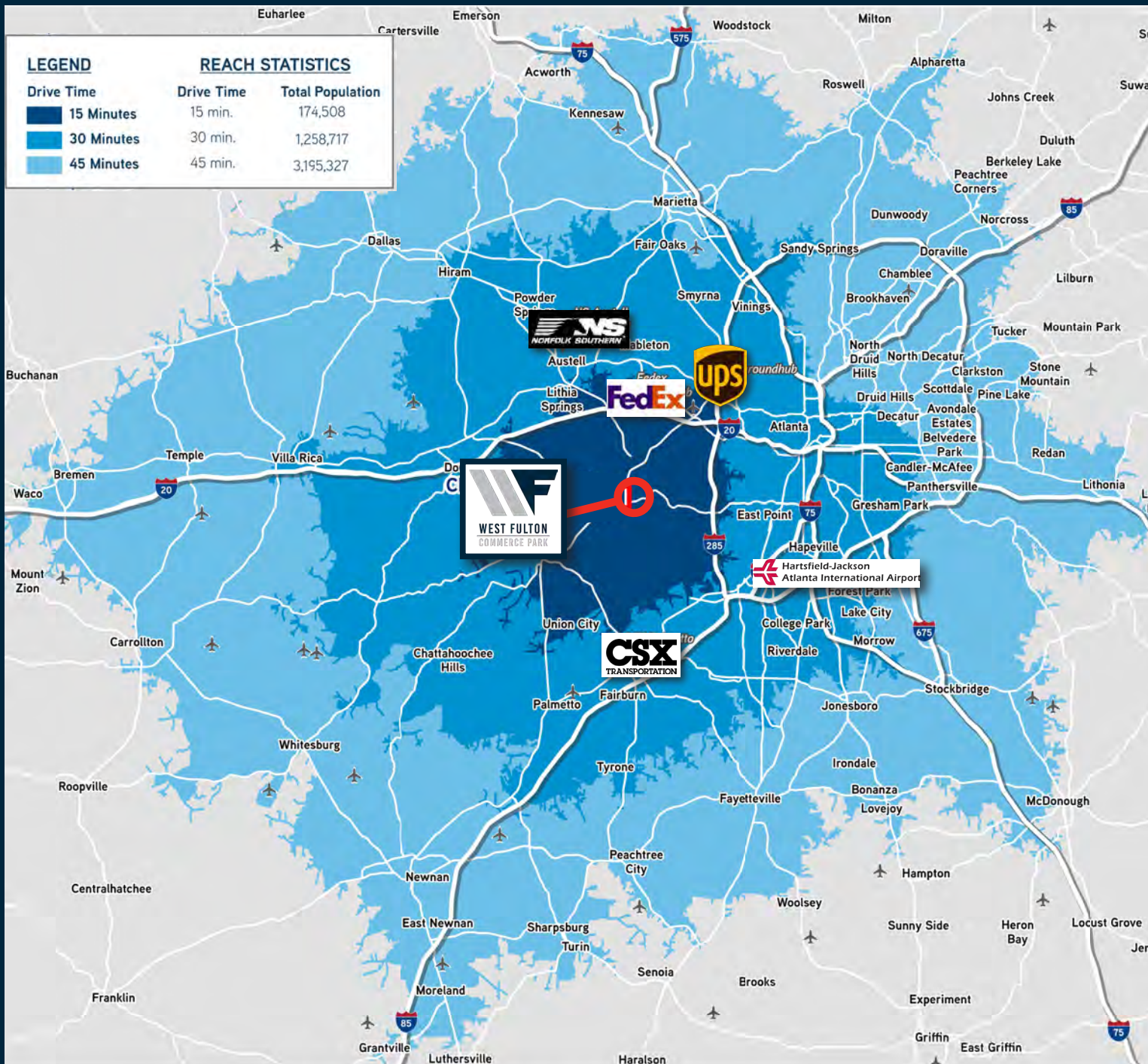


# BUILDING 4 FEATURES

TOTAL SQUARE FEET	633,300 SF	COLUMN SPACING	54' x 47.5'
SPEC OFFICE	3,404 SF	DIMENSIONS	1,260' w x 500' d
CLEAR HEIGHT	36'	PARKING	317 autos, 240 trailers
DOCK HIGH DOORS	148	SPRINKLER SYSTEM	ESFR
DRIVE-IN DOORS	4	ADDITIONAL FEATURES	Clerestory windows







# DRIVE TIMES

## 5.8 MILES

Distance to I-20 West

## 14.6 MILES

Distance to Downtown Atlanta

## 12 MILES

Distance to Hartsfield-Jackson International Airport

## 7.5 MILES

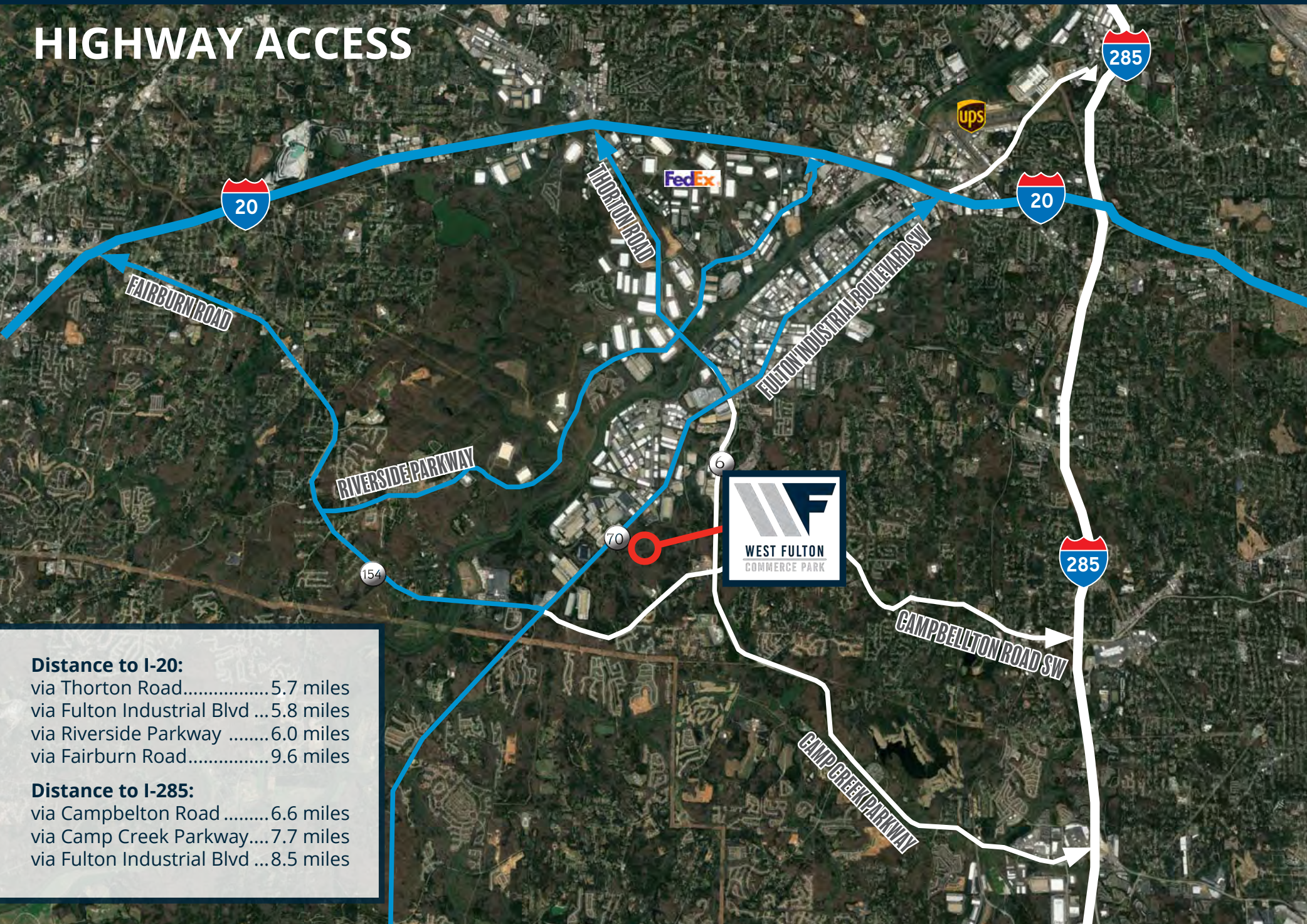
Distance to UPS Groundhub (Charlie Brown)

## 5.7 MILES

Distance to FedEx Groundhub (Factory Shoals)



# HIGHWAY ACCESS







# WEST FULTON COMMERCE PARK



[www.WestFultonCommercePark.com](http://www.WestFultonCommercePark.com)



PRICE WEAVER  
+1 404 877 9266  
[price.weaver@colliers.com](mailto:price.weaver@colliers.com)

SCOTT PLOMGREN  
+1 404 877 9293  
[scott.plomgren@colliers.com](mailto:scott.plomgren@colliers.com)

HARRISON MARSTELLER  
+1 404 877 9219  
[harrison.marsteller@colliers.com](mailto:harrison.marsteller@colliers.com)

HOOPER WILKINSON  
+1 404 877 9233  
[hooper.wilkinson@colliers.com](mailto:hooper.wilkinson@colliers.com)



COLLIERS ATLANTA | 1230 Peachtree Street NE, Suite 800 | Atlanta, GA 30309 | +1 404 888 9000 | [www.colliers.com](http://www.colliers.com)

This document has been prepared by Colliers for advertising and general information only. Colliers makes no guarantees, representations or warranties of any kind, expressed or implied, regarding the information including, but not limited to, warranties of content, accuracy and reliability. Any interested party should undertake their own inquiries as to the accuracy of the information. Colliers excludes unequivocally all inferred or implied terms, conditions and warranties arising out of this document and excludes all liability for loss and damages arising there from. This publication is the copyrighted property of Colliers and /or its licensor(s). © 2023. All rights reserved. This communication is not intended to cause or induce breach of an existing listing agreement.



FULTON INDUSTRIAL BLVD.  
(200' R/W — PUBLIC)

